

Haiwell TV-Box Manual

TV-Box INSTRUCTIONS

CATALOG

SUMMARY

Products Introduction	错误！未定义书签。
TV-Box	
I TV-Box Interface Diagram	3
II Display Remote Controller Introduction	错误！未定义书签。
III Power On	错误！未定义书签。
IV TV-Box Connections Settings	3
1. Hardware Connection	错误！未定义书签。
2. Network Connection	错误！未定义书签。
V Local Equipment	错误！未定义书签。
1. Access Device	错误！未定义书签。
● When HMI project is network project.....	错误！未定义书签。
● When HMI project is local project.....	错误！未定义书签。
2. Remote Operation for HMI	8
● Allow Remote Operation	错误！未定义书签。
● No Remote Operation Permissions	错误！未定义书签。
VI Historical Records	错误！未定义书签。
1. Access Historical Records of The HMI Device	错误！未定义书签。
● When HMI project is network project	错误！未定义书签。
● When HMI project is local project.....	错误！未定义书签。
2. HMI Remote Operation HMI	错误！未定义书签。
● Allow Remote Operation.....	错误！未定义书签。
● No Remote Operation Permissions	错误！未定义书签。
VII Function Menu	错误！未定义书签。
1. Refresh	错误！未定义书签。
2. Clear History	错误！未定义书签。
3. Network Setting	错误！未定义书签。
● WLAN Connection	13
● Ethernet Connection	错误！未定义书签。
4. Multilingual Setting	错误！未定义书签。
● Chinese.....	错误！未定义书签。
● English	15
5. Screen Zoom Setting	错误！未定义书签。
6. Offline Update	错误！未定义书签。
7. Online Update	错误！未定义书签。
8. View Version Information	错误！未定义书签。
VIII Power off	错误！未定义书签。

SUMMARY

Products Introduction

Large screen controller Haiwell TV-Box can access the HMI device of local network. The TV-box will make HMI screen larger to fit the TV screen size. It supports different brands of TV. Its characteristics are:

- **Innovation Of The Project**

- ✓ Larger HMI screen effect according to the TV screen size.
- ✓ Supports remote control buttons, wired keyboard and mouse operation modes. It is easy to operate.

- **Remote Management**

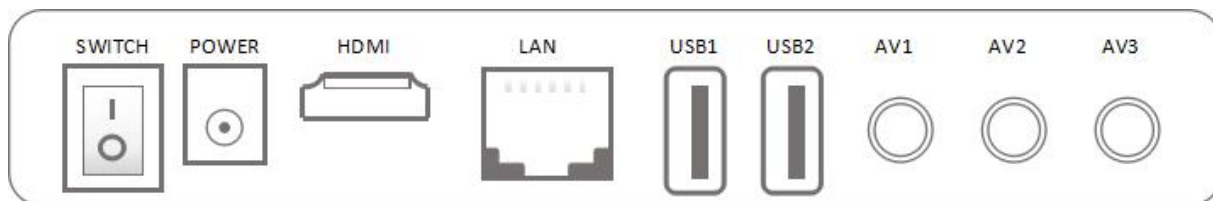
Supports display, access and remote control the HMI of local area network.

- **Update Version**

Supports online and offline firmware version upgrading.

Large screen controller TV-Box Introduction

I TV-Box Interface Diagram



II Remote controller introduction

1. Control the display on the screen.
2. Power button control display switch;
3. Volume button control display volume;
4. Arrow button are used to navigate the on-screen menu, up, down, left, and right.;
5. Setting button to enter TV-Box function setting;
6. Home button is used to control the screen to return to the main page.;
7. Return button used to return to the previous screen;
8. Numeric key can be used as a keyboard input value.



III POWER ON

- **TV-Box Power ON**

Press TV-Box power button to open the machine.

- **Display Power ON**

Press display power button or power button of remote controller to open the machine.

IV TV-Box CONNECTION SETTINGS

The HMI and TV-box should be in one same local network.

In this example, the HMI-C7 touch screen displays on LCD TV through the TV-Box.

1. Hardware Wiring

● Equipments power ON

HMI-C7 touch screen,TV-Box and display power ON.

● Equipment connection

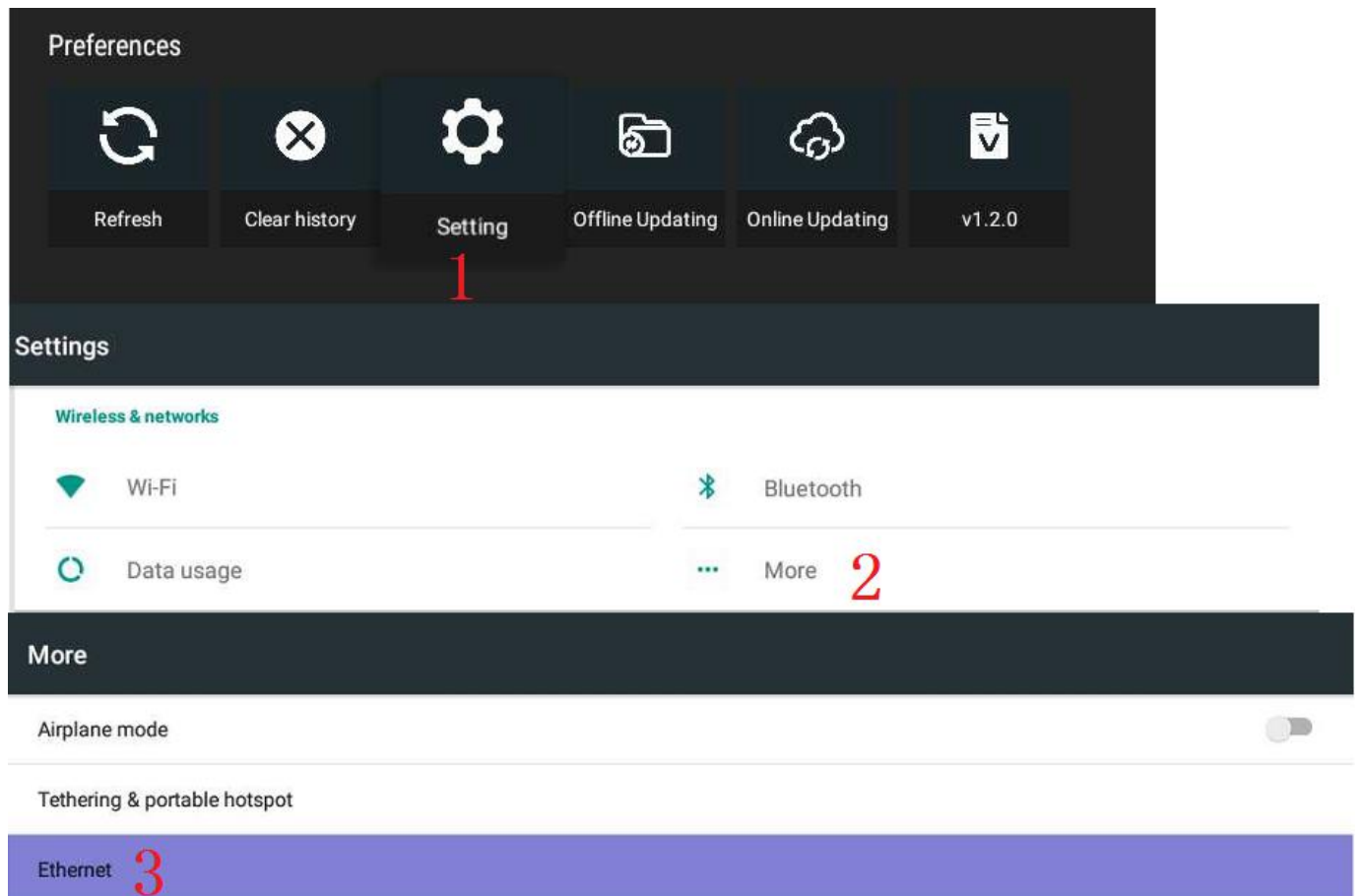
① The HDMI interface of the TV-Box is connected to the HDMI1 interface of the TV (in this example, the TV has two interfaces, HDMI1 and HDMI2) ;

② HMI-C7 touch screen, TV-Box connects to Ethernet

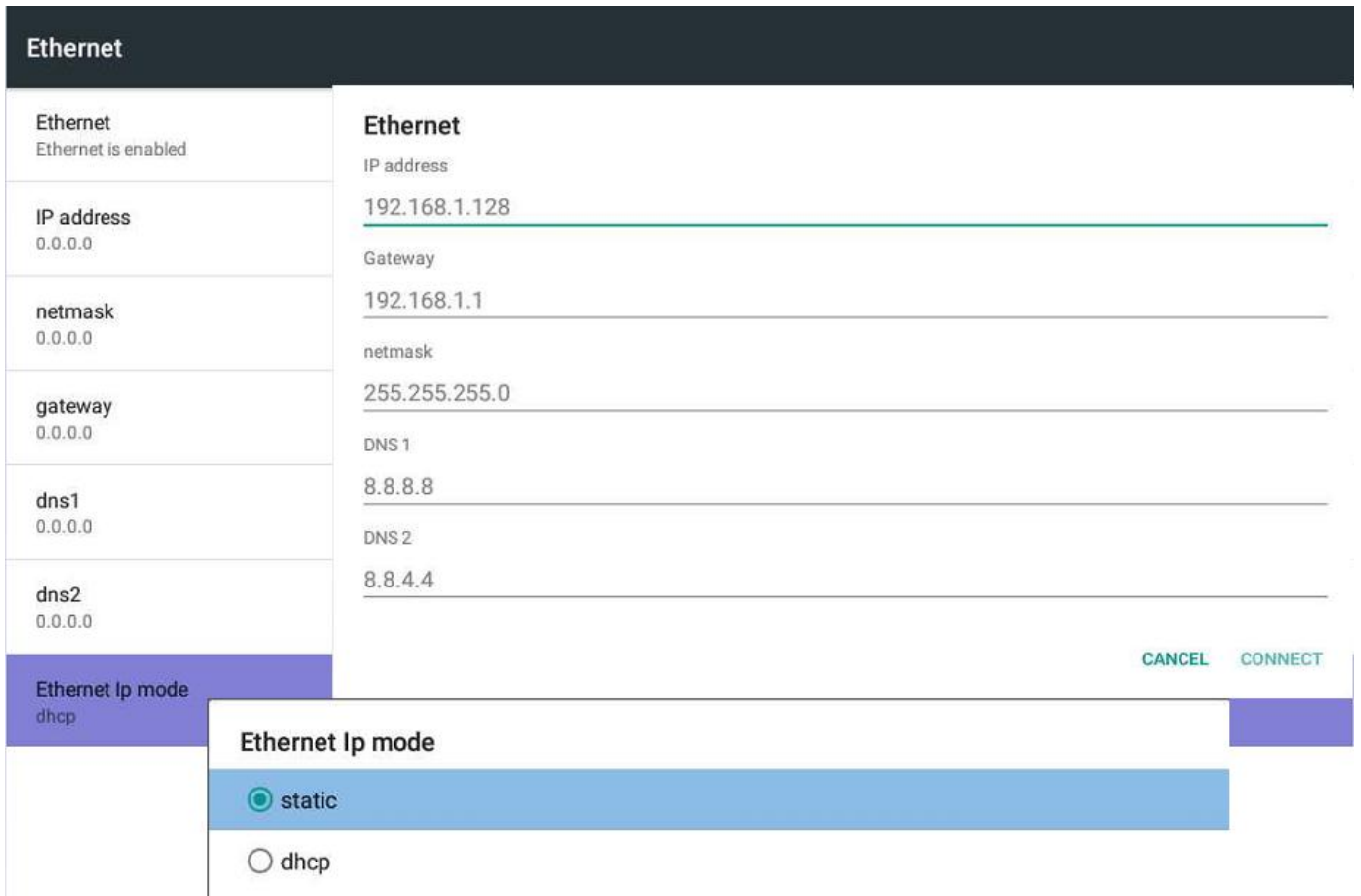
After successful wiring, the TV shows the TV-Box main interface, including local devices, historical access devices, and function menu information. The user can do remote access to HMI and remote control HMI by setting the TV-box properties. The first time you connect the TV-Box to the TV display, you need to configure the network. This example describes how to set a dynamic IP.

2. Network Connection

Click [Settings] in the [Function Menu] to enter the setting interface; click [More] to enter more interfaces; select [Ethernet] to enter the Ethernet configuration interface.



Enter the Ethernet connection interface, click [Open], open the Ethernet connection, click [Ethernet Mode], select "Dynamic Address", enter the IP setting interface, configure the relevant information and click [Connect].



V LOCAL EQUIPMENT

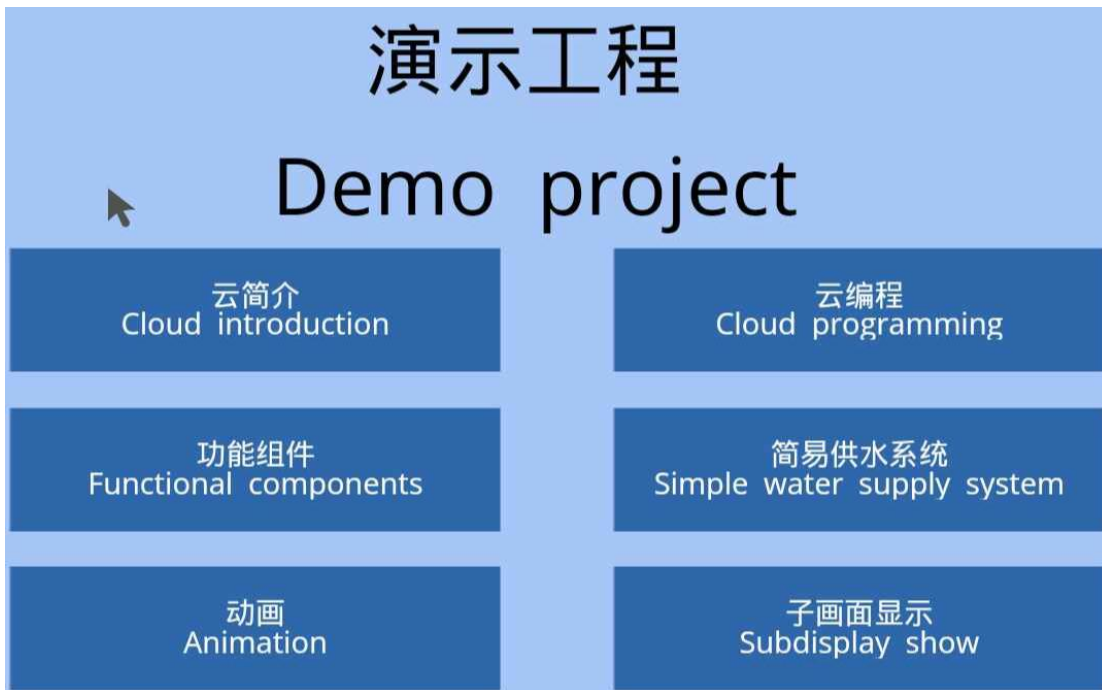
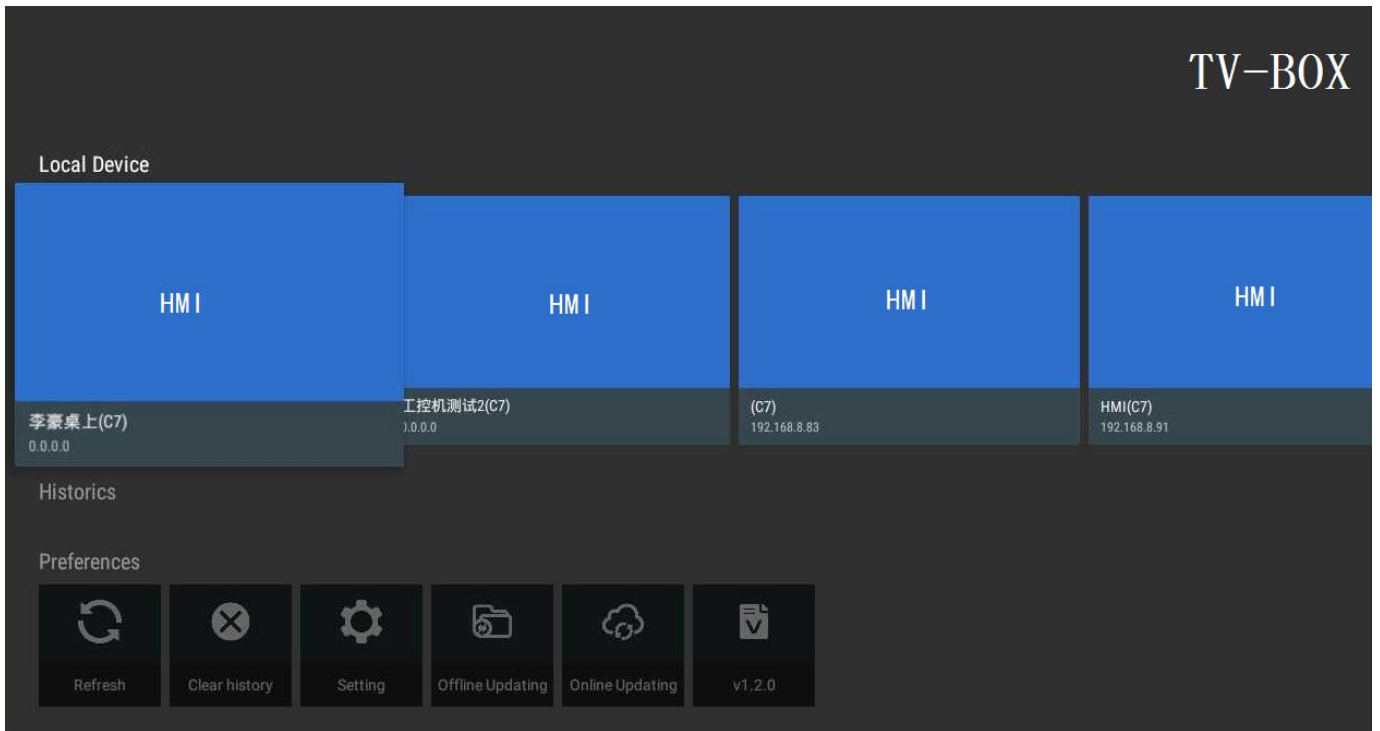
TV-Box can search the all HMI devices of local area network. By accessing the device, the screen of the tHMI can be displayed on the TV and the HMI can be controlled remotely.

1. Access Equipment

Accessing the HMI device via TV-Box requires that the project on the HMI to be a network project. If the project on the HMI device is a local project, there is no remote access.

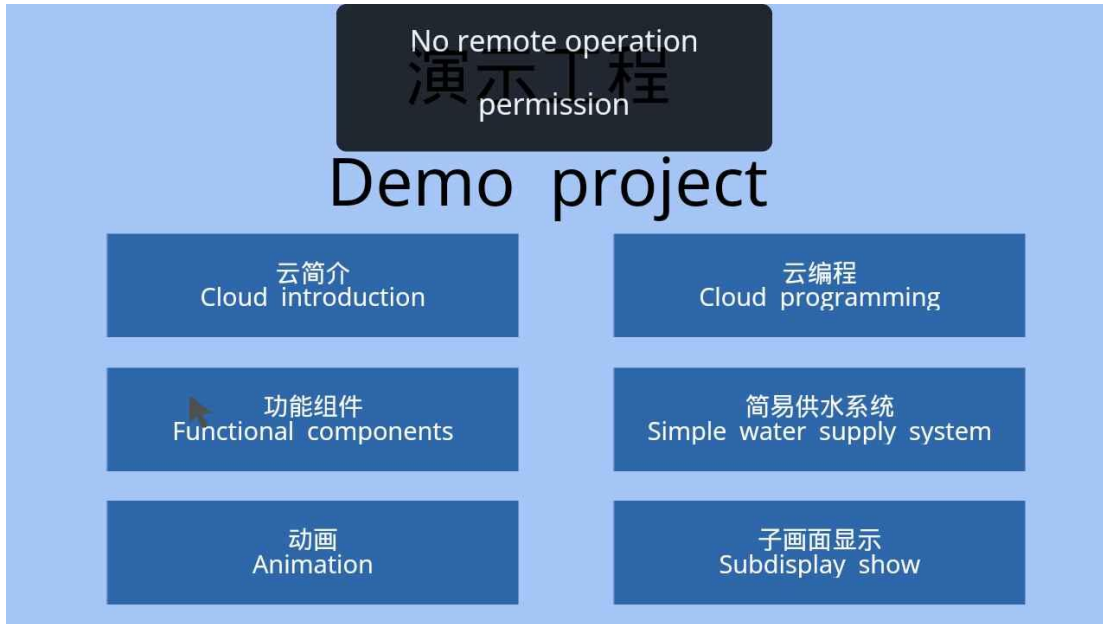
- **When HMI project is network project**

Select the HMI device, press [OK] on the remote controller to enter the HMI device interface, and the screen information on the HMI can be displayed correctly. To exit the HMI access interface, press [Return] on the remote controller to return to the main interface.



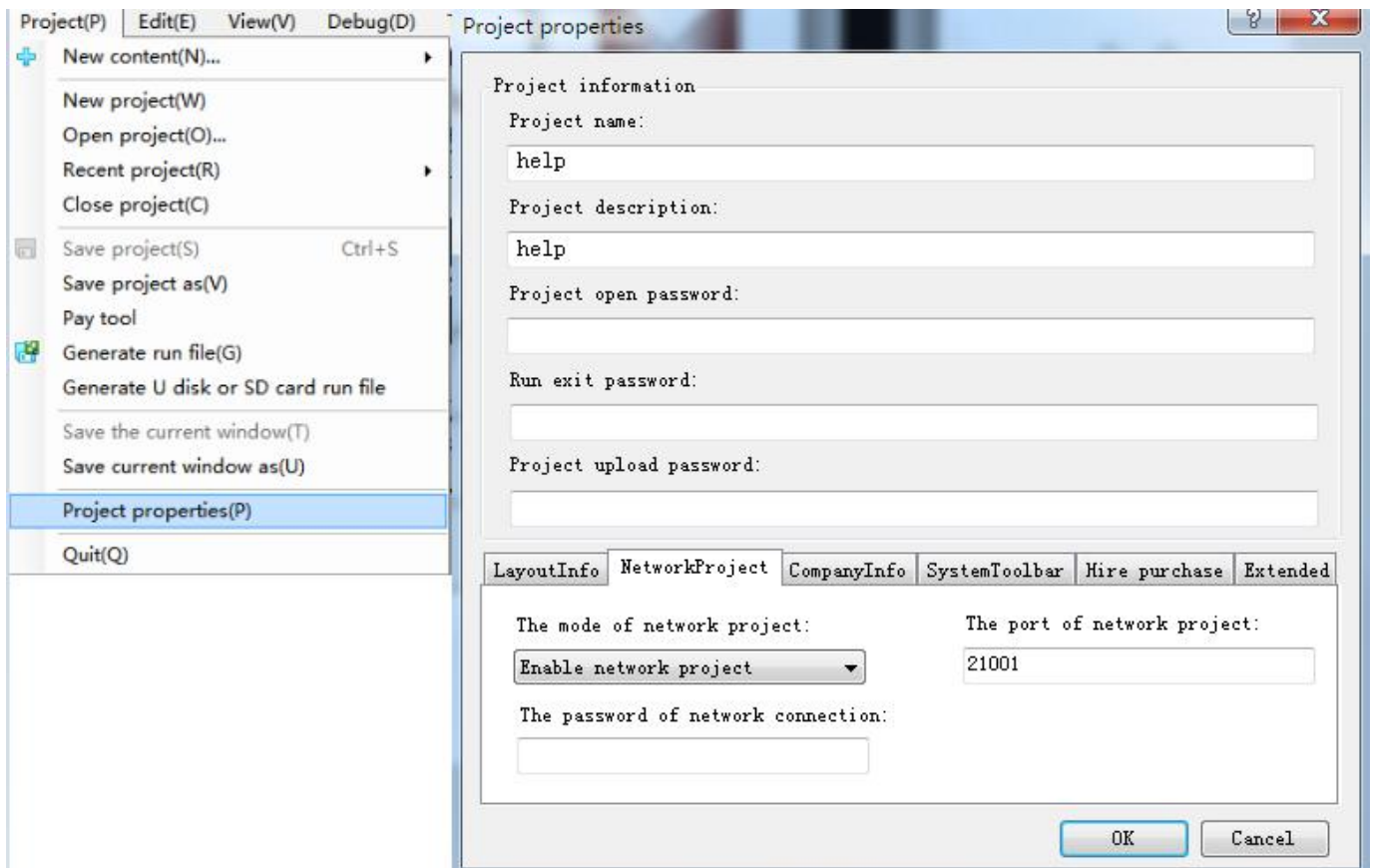
- When the HMI project is local project

Select the HMI device, press [OK] on the remote controller, and the device will pop up the prompt “No access rights” .

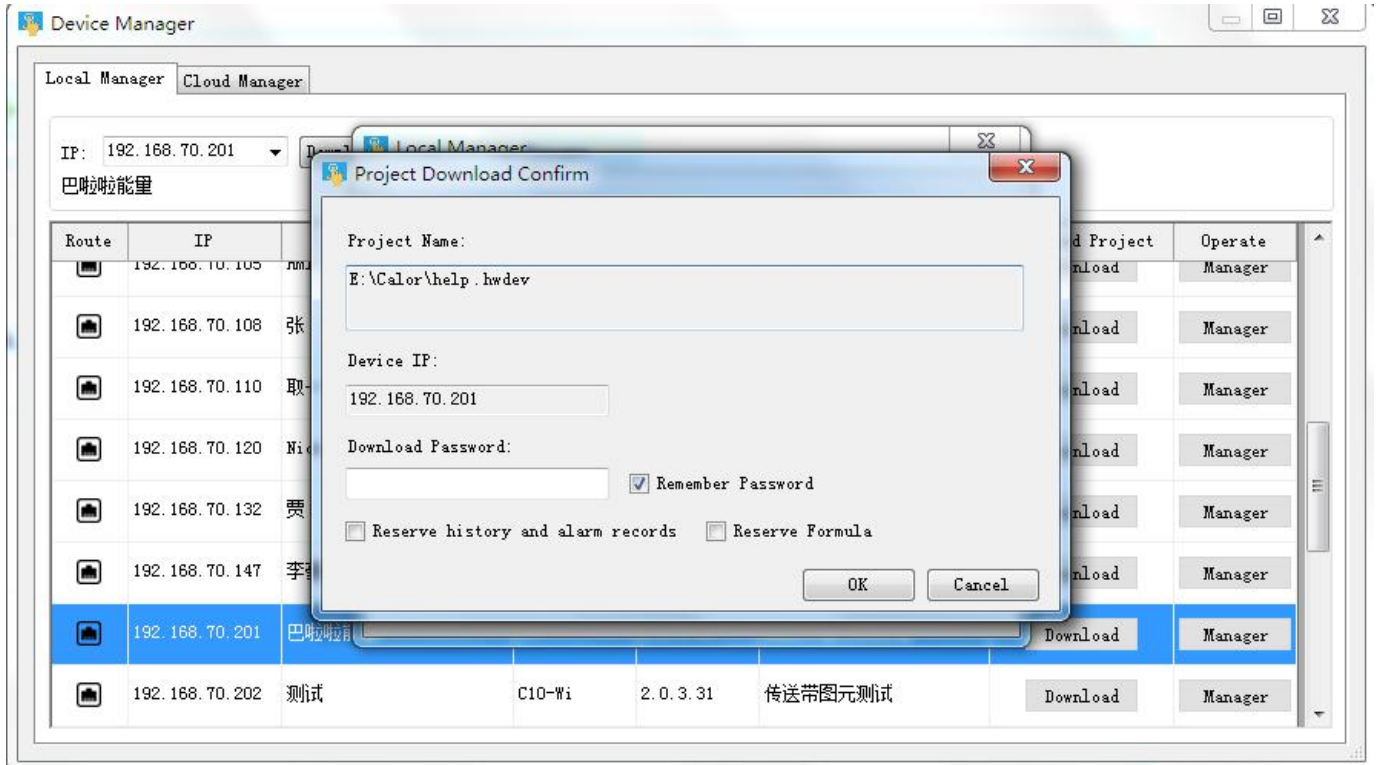


Access to HMI through tv-box requires setting the project as a network project and downloading the project again to HMI. The operation steps are as follows:

- ① Open the project to be accessed in configuration; From toolbar to project --project properties -- network project--, set to "enable network project".



- ② Open the device manager, , click download project through local manager / cloud manager, download the project to HMI.



2. HMI Remote Operation

Access and remotely control of HMI through TV-Box must satisfy two conditions: the project is network project and allows remote operation. If the HMI download project does not set "allow remote operation", HMI can not be remotely controlled.

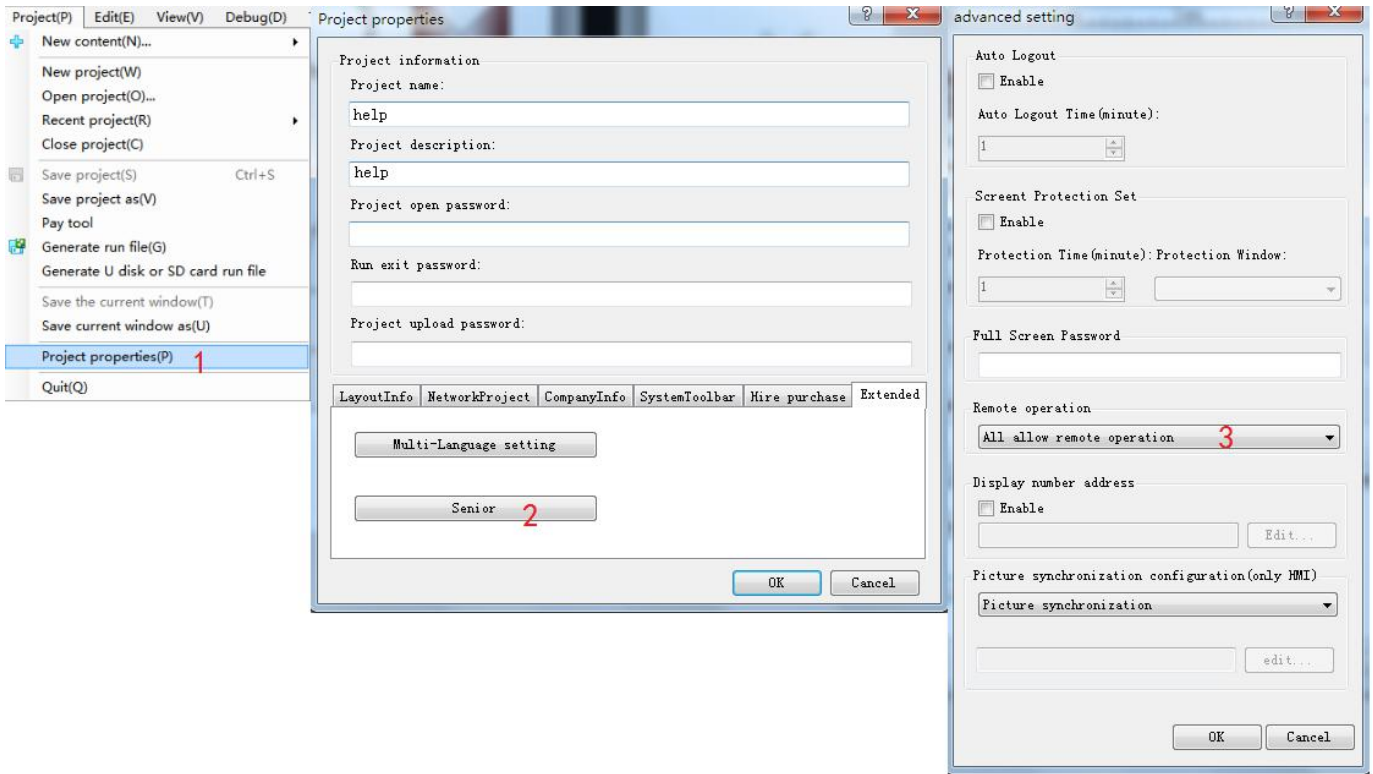
- **Allow Remote Control Operation**

If the project allows remote operation, then we can control the component of the HMI project.

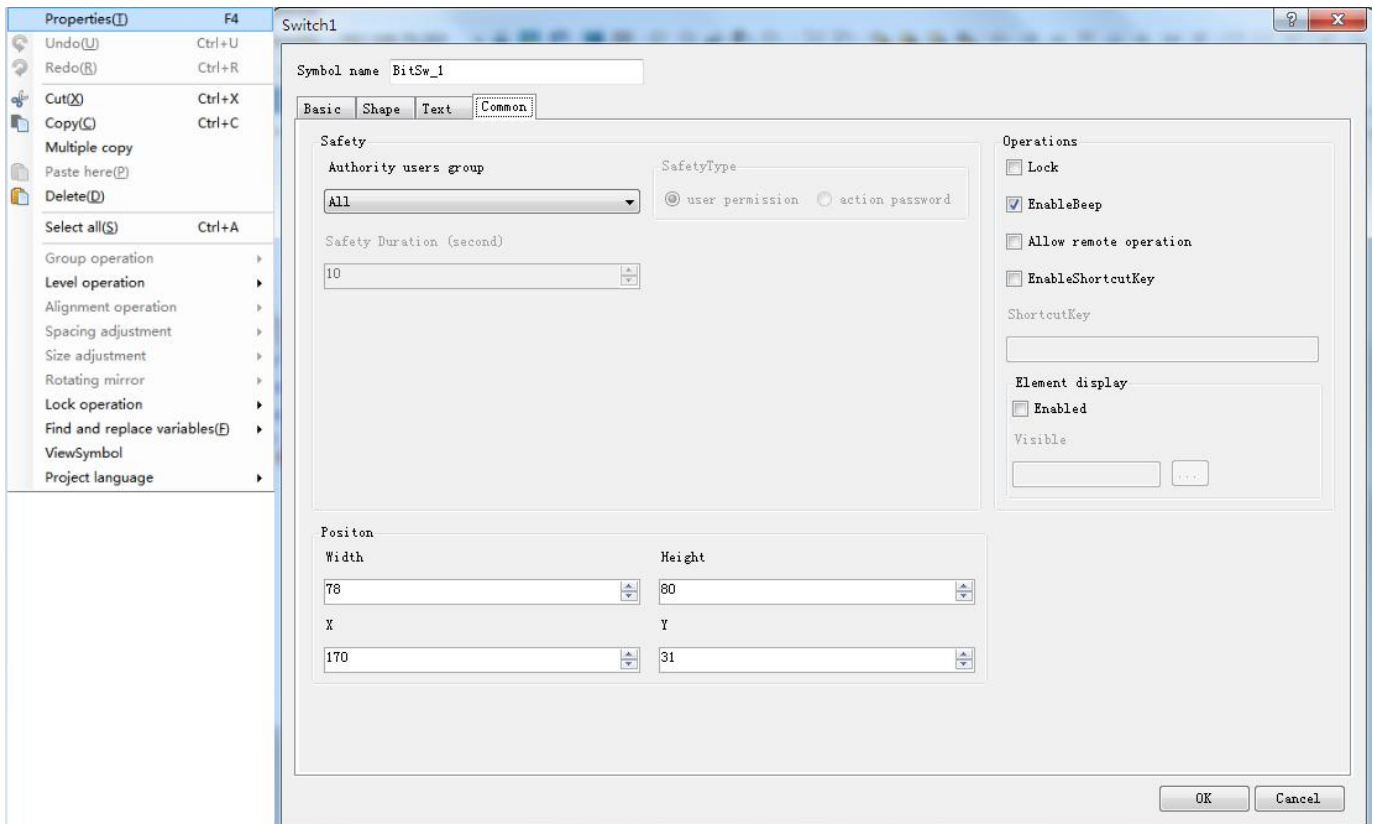
- **No Remote Control Permission**

If the total project or the project component does not have permission to allow remote operation, when accessing the network project, it will pop up the prompt box "No remote operation permission". If the HMI download project does not set "Allow remote operation", you need to set the project to allow remote operation in the configuration. The steps are as follows:

- ① Open the project to to set configuration, From the toolbar to the project - project properties - extension - advanced setting - remote operation, set the project to "all allow remote operations."



② Open the project to be accessed in configuration; Open the screen from the project browser - select the element - right click into the properties - common properties - allow remote operations, set the element to "all allow remote operations."



VI HISTORY RECOED

The historical visit record function records all the past IP address of the device that the user has visited.

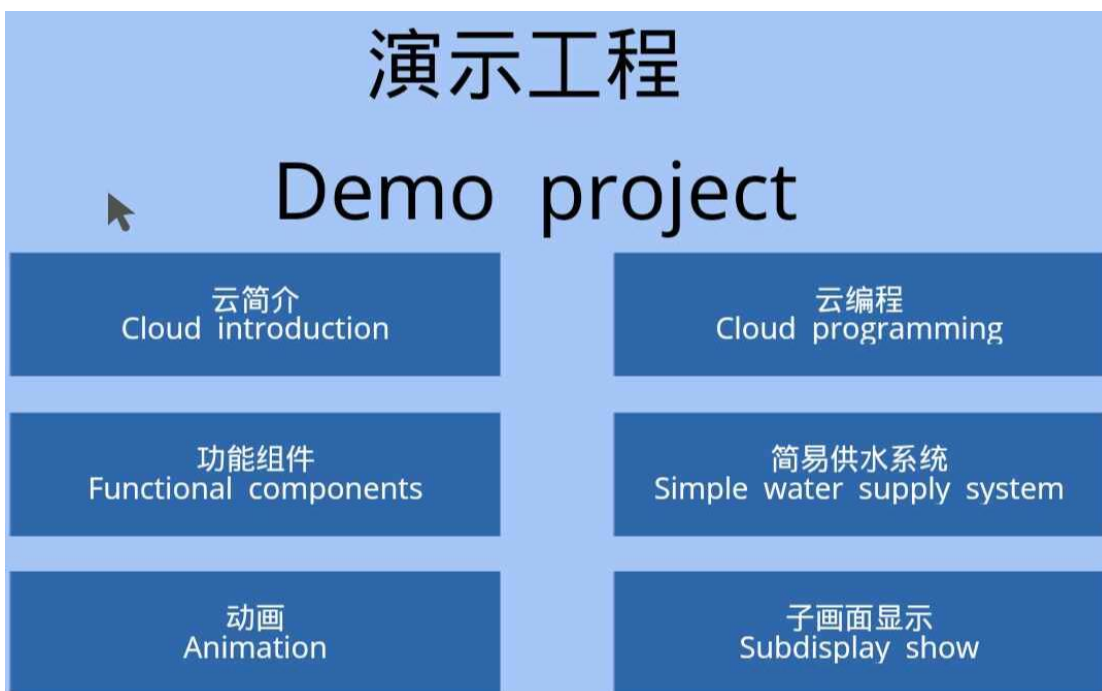
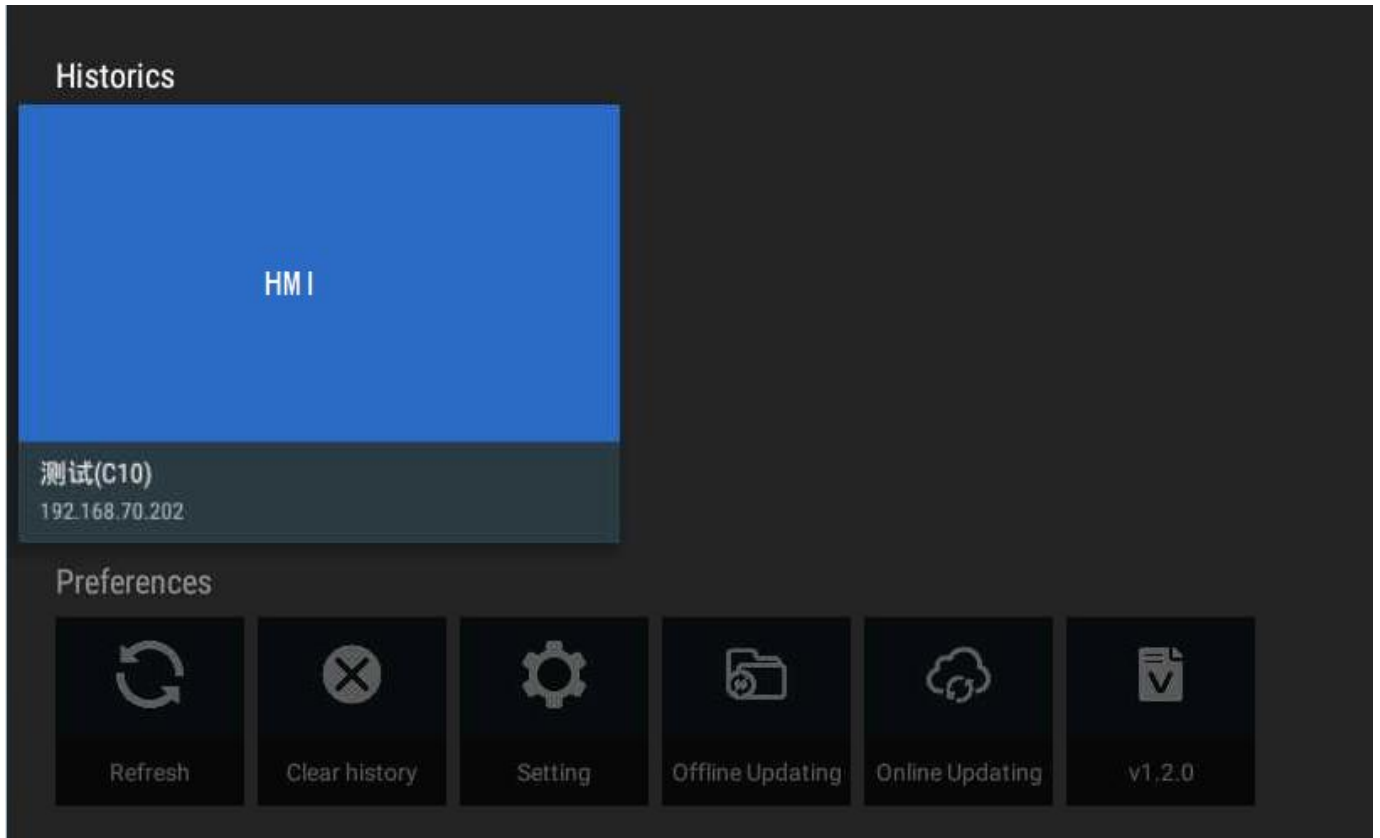
1. HMI Device Access History

After accessing the HMI device, the remote control presses the [Back] key to return to the main interface; viewing the history, you can see that the recently accessed HMI device has been added to the history.

Accessing the HMI device via TV-Box requires that the project on the HMI be a network project. If the project on the HMI device is a local project, there is no remote access.

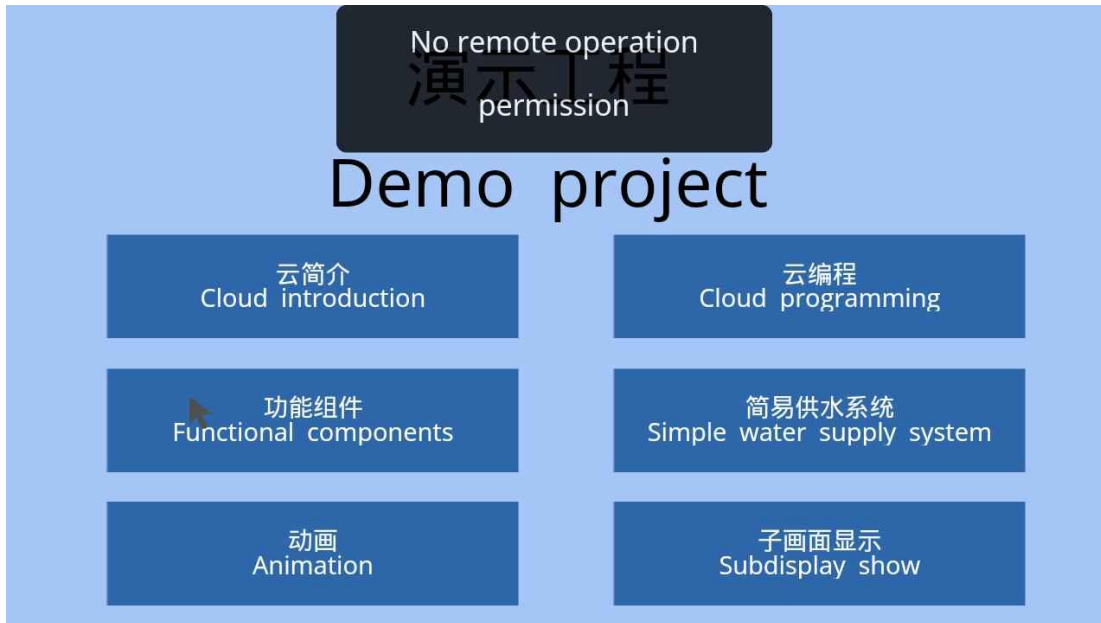
- When the HMI project is network project

Select the HMI device and press the [OK] button on the remote control to enter the HMI device interface to display the HMI information correctly. To exit the HMI access interface, press the [Back] key on the remote control to return to the main interface.



- When HMI project is local project

Select HMI device, press the [OK] button on the remote control, then the device will pop up the prompt “No access rights” .



To access the HMI via TV-Box, you need to set up the project as a network project and download the project to the HMI again. Refer to the steps in the local device to set the project as a network project.

2. Remote Operation on HMI

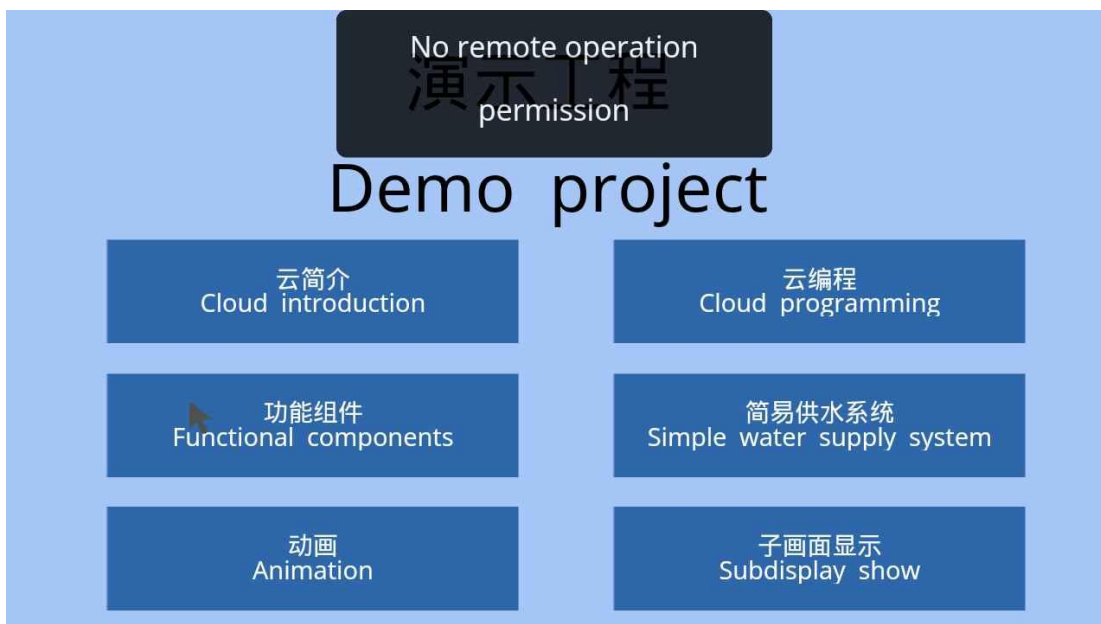
Accessing and remotely controlling the HMI via TV-Box requires both network project and remote operation permission.

- Allow Remote Operation

If the project or component setting allows remote operation, when accessing the network project, the entity is manipulated, and the operation can be performed on the component.

- No Remote Operation Permission

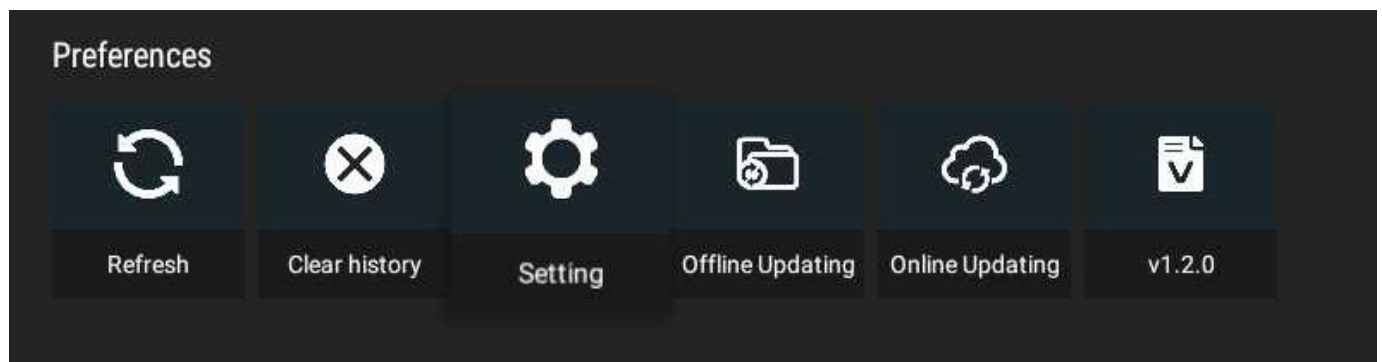
If the project or the element does not have permission to allow remote operation, when accessing the network project, the operation element will pop up the prompt box "No remote operation permission", and the entity cannot be operated.



VII FUNCTION MENU

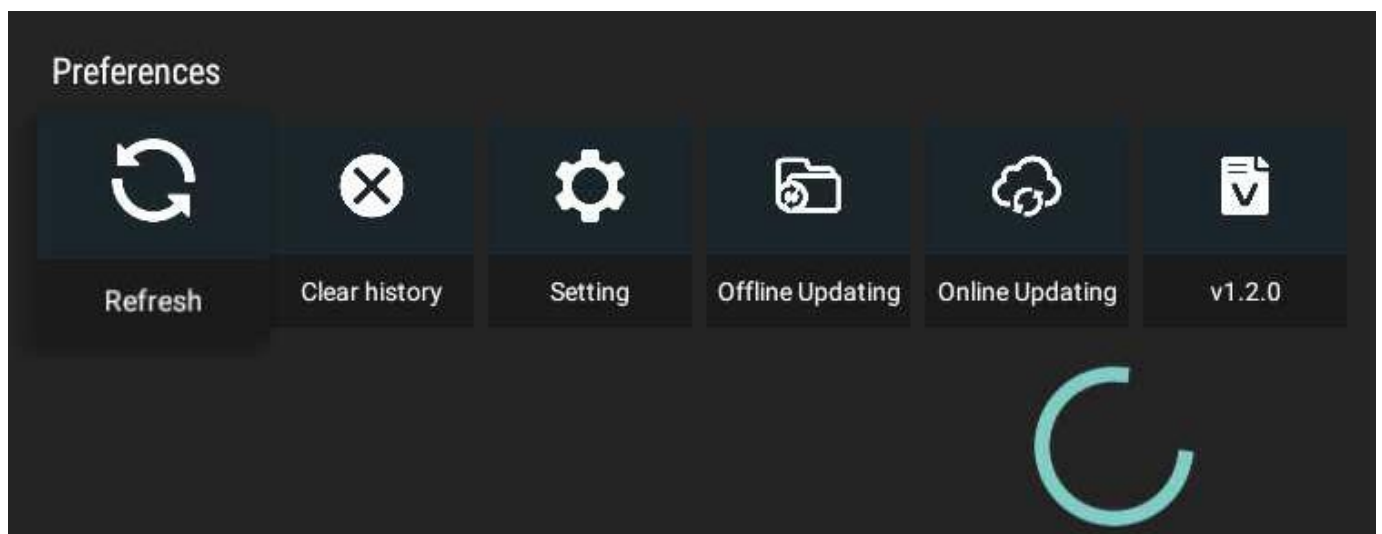
The function menu including the refresh,clear history record, setting, online update, offline update and view firmware version information, per function are follows:

- ✓ **【refresh】** Then function to refresh local and historical device lists
- ✓ **【clear history record】** The function to clear device access record
- ✓ **【setting】** The function including the network setting, multi-language and screen zoom setting. It can setting device to connect Ethernet or WIFI; freely change TV-Box software language. Set display size
- ✓ **【online update】** The function can update TV-Box software version online
- ✓ **【offline update】** The function can update software version though update package in the TV-Box.
- ✓ **【view version information】** The function to view current software information in real time



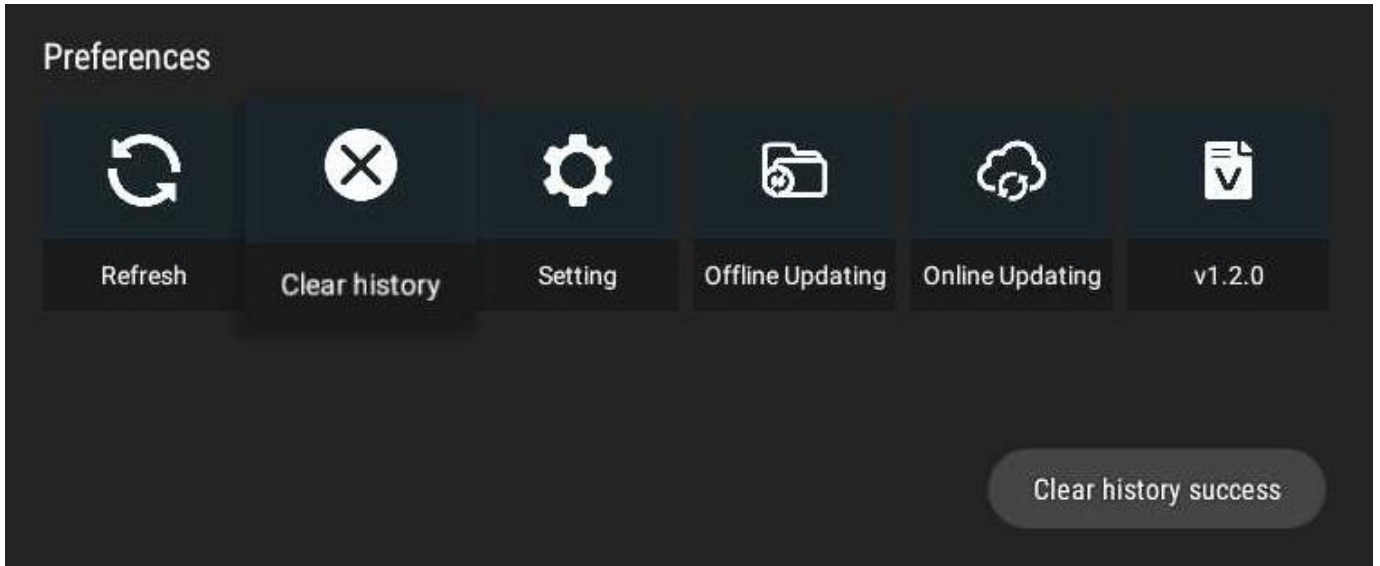
1. Refresh

Select **【Refresh】** in the **【Function Menu】** and press the **【OK】** button on the remote control to refresh the local HMI list.



2. Clear History Record

Select **【Clear history】** in the **【Function Menu】** and press the **【OK】** button on the remote control to clear history record list.

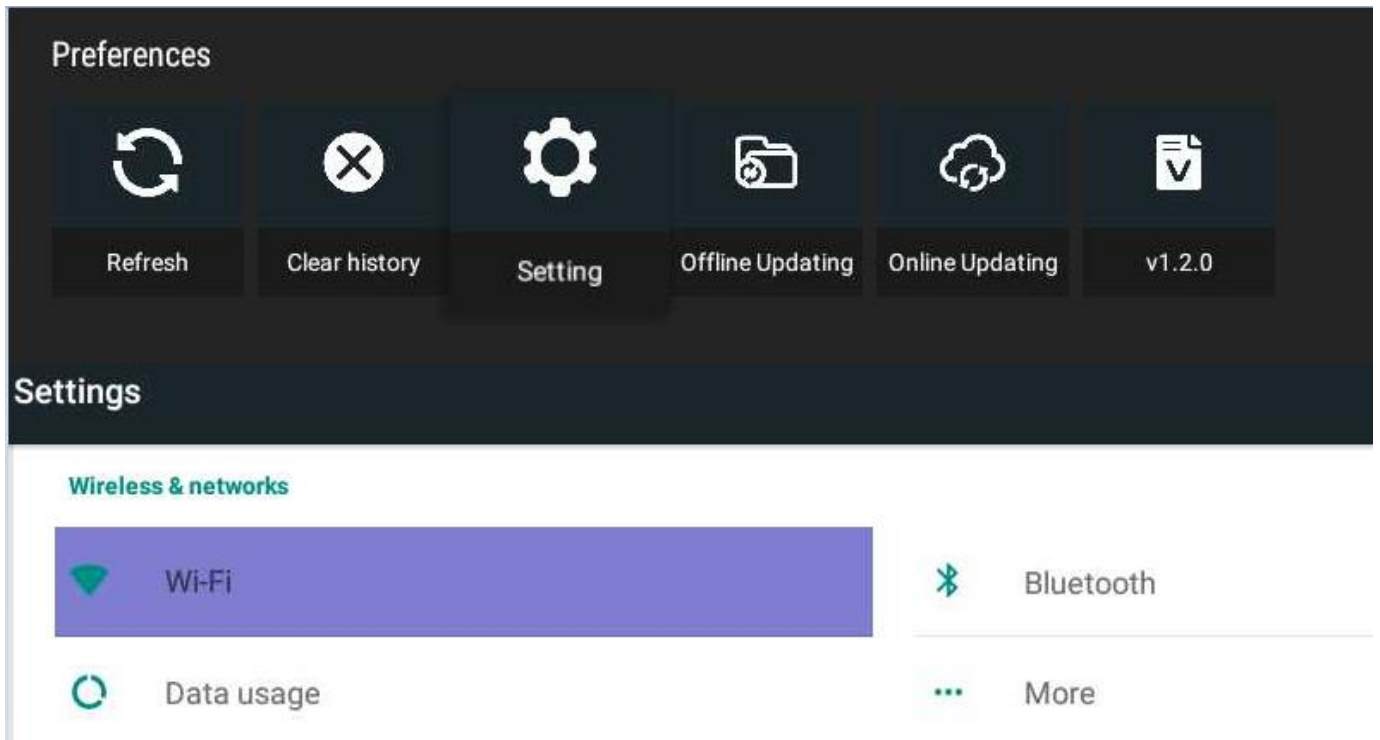


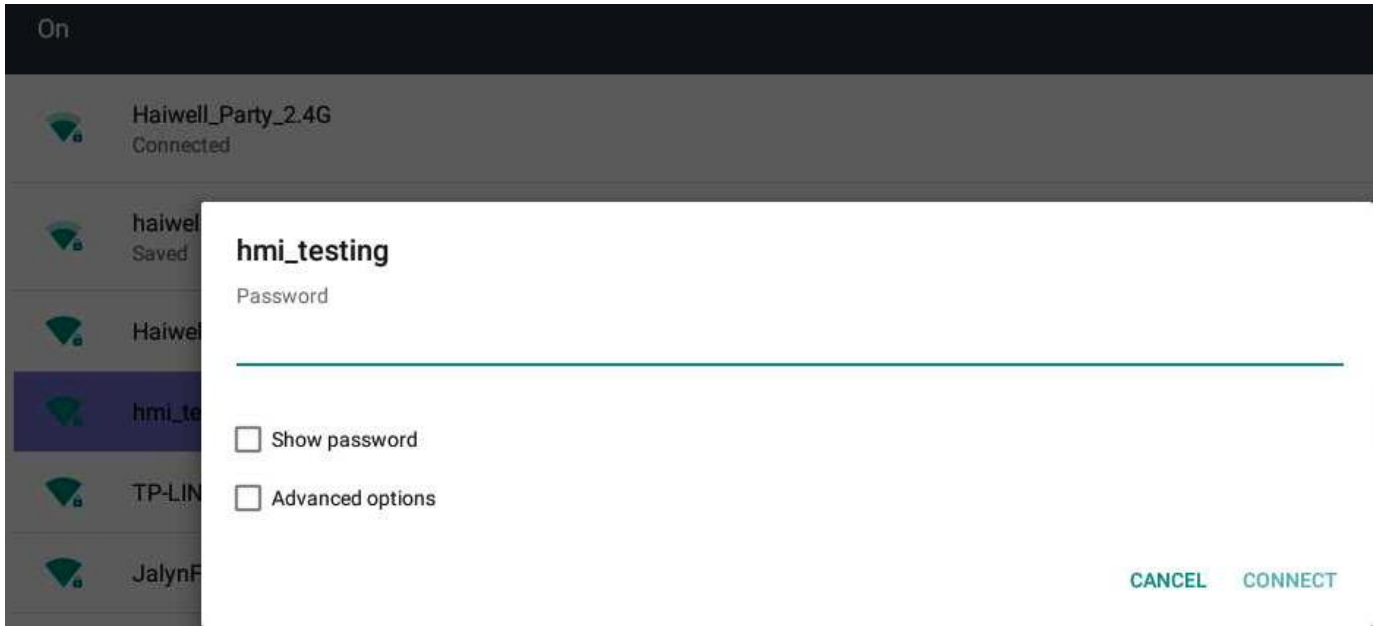
3. Network Setting

- WLAN Connect

Select [Settings] in the [Function Menu], press [OK] on the remote controller to enter the setting interface; select [WLAN], press [OK] to enter the WLAN setting interface; select [On], remote control Press [OK] to turn on the WLAN, and the list shows the connected and searched network information.

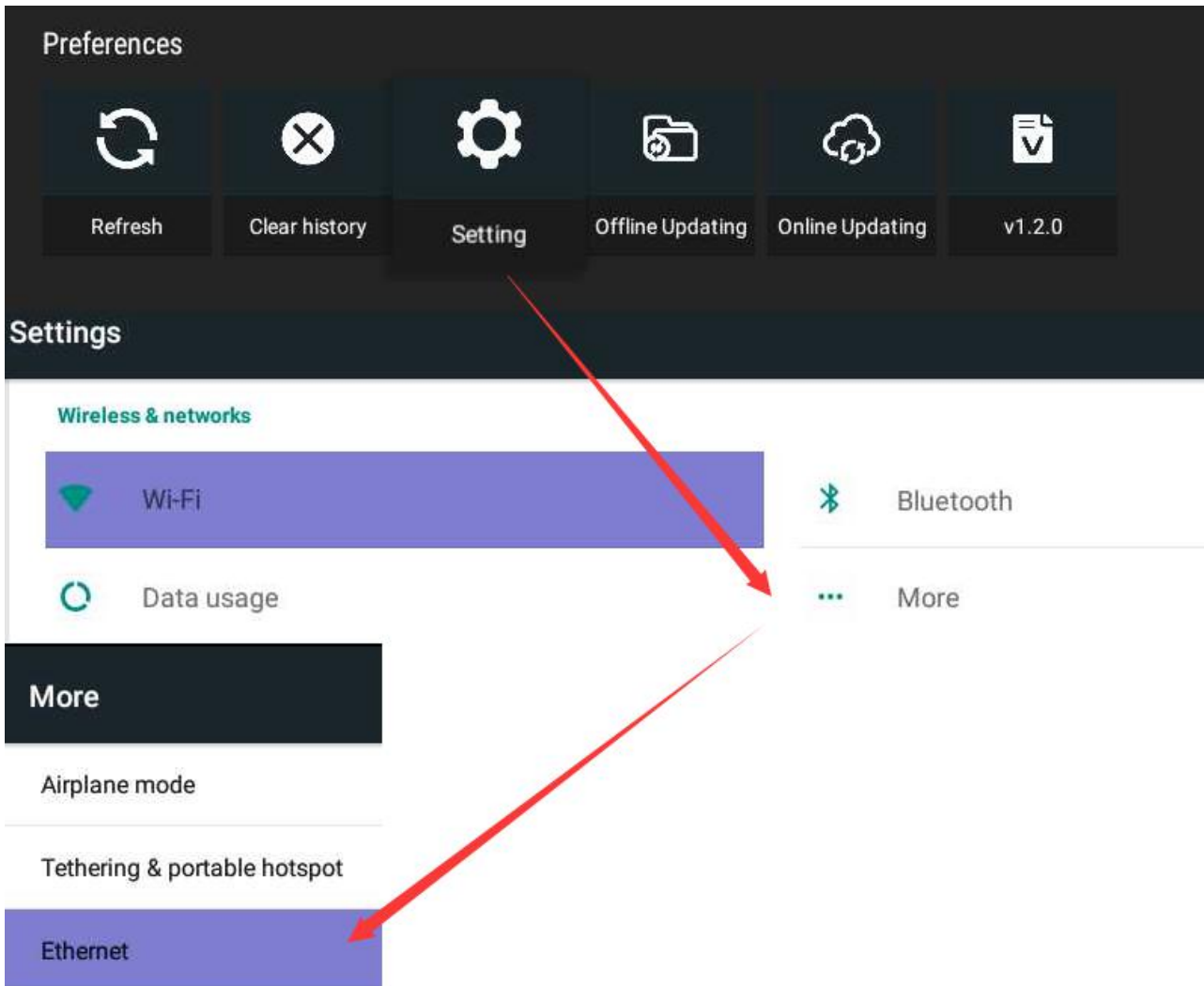
Select any network that is not connected, double-click, and the connection box will pop up. If the correct WLAN password is entered, the WLAN connection is successful; if the wrong WLAN password is entered, the connection fails.





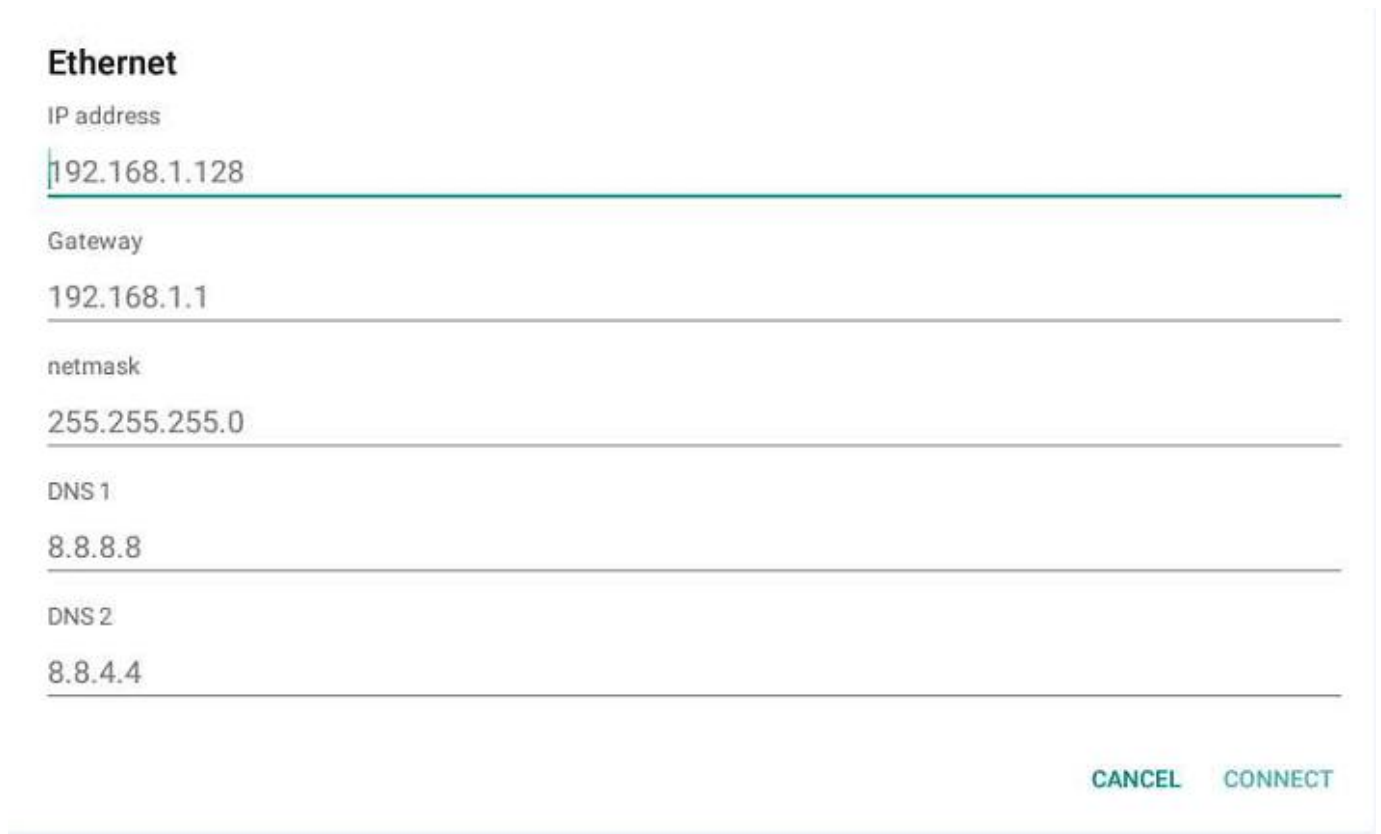
• Ethernet Connect

In the [Function Menu], select [Settings], press the [OK] button on the remote controller to enter the setting interface; select [More], press the [OK] to enter more interfaces; select [Ethernet], Press the [OK] button to enter the Ethernet configuration



Enter the Ethernet connection interface, select [open], the remote control press [OK] key, open the Ethernet connection, click on

the Ethernet mode, select "dynamic access" or "static address", enter the IP settings interface, configure the relevant information to select [connect],



The screenshot displays the Ethernet configuration screen. At the top, the word "Ethernet" is written in bold. Below it, there are five input fields, each with a label and a value: "IP address" with "192.168.1.128", "Gateway" with "192.168.1.1", "netmask" with "255.255.255.0", "DNS 1" with "8.8.8.8", and "DNS 2" with "8.8.4.4". At the bottom right of the screen, there are two buttons: "CANCEL" and "CONNECT".

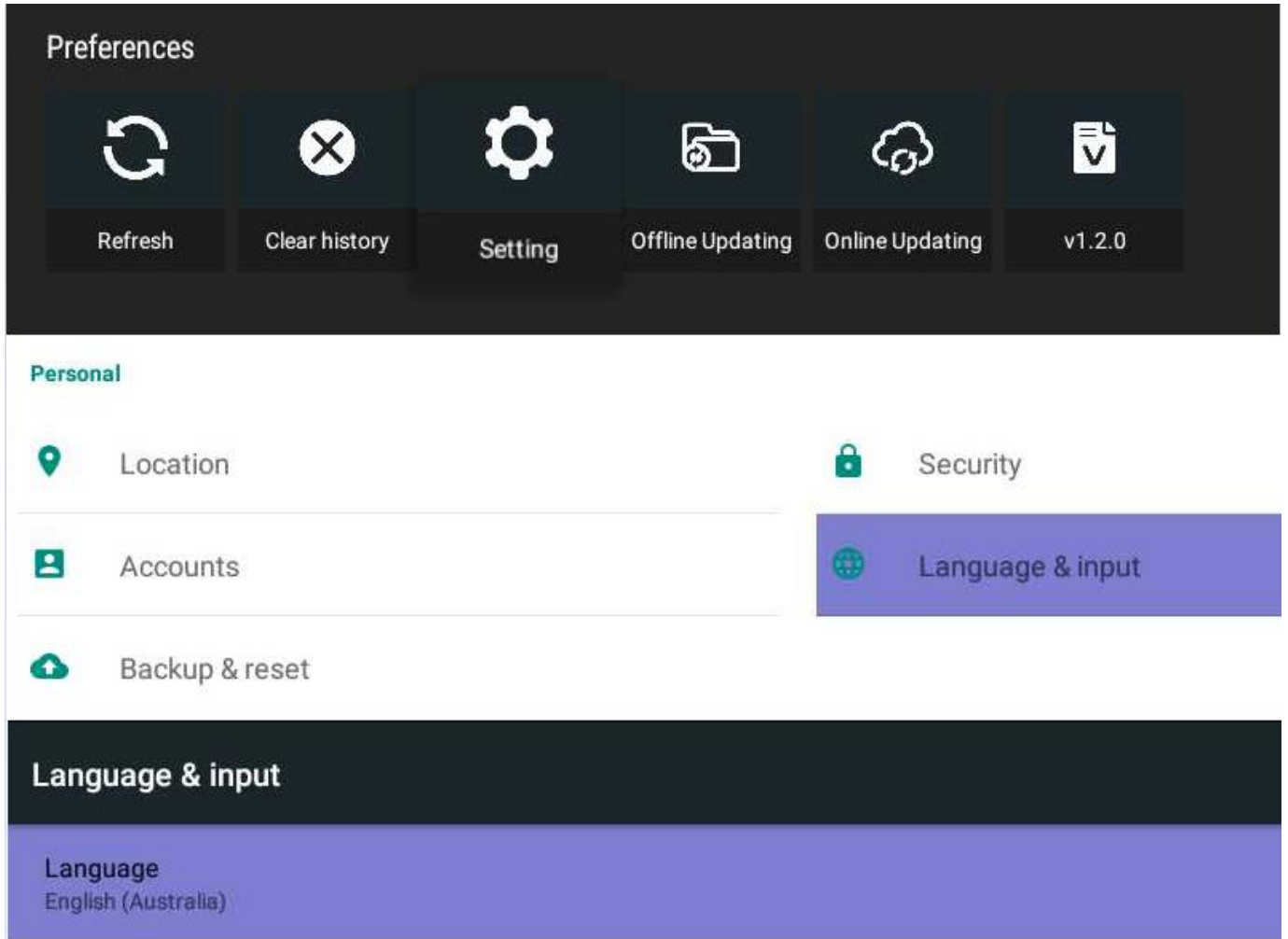
4. Multi-language Setting

- Chinese

在【功能菜单】处选择【设置】，遥控器按下【OK】键，进入设置界面，选择【语言和输入法】，遥控器按下【OK】键，进入界面语言和输入法后，选择【语言】，遥控器按下【OK】键，选择【中文（简体）】，则可设置界面语言为简体中文。

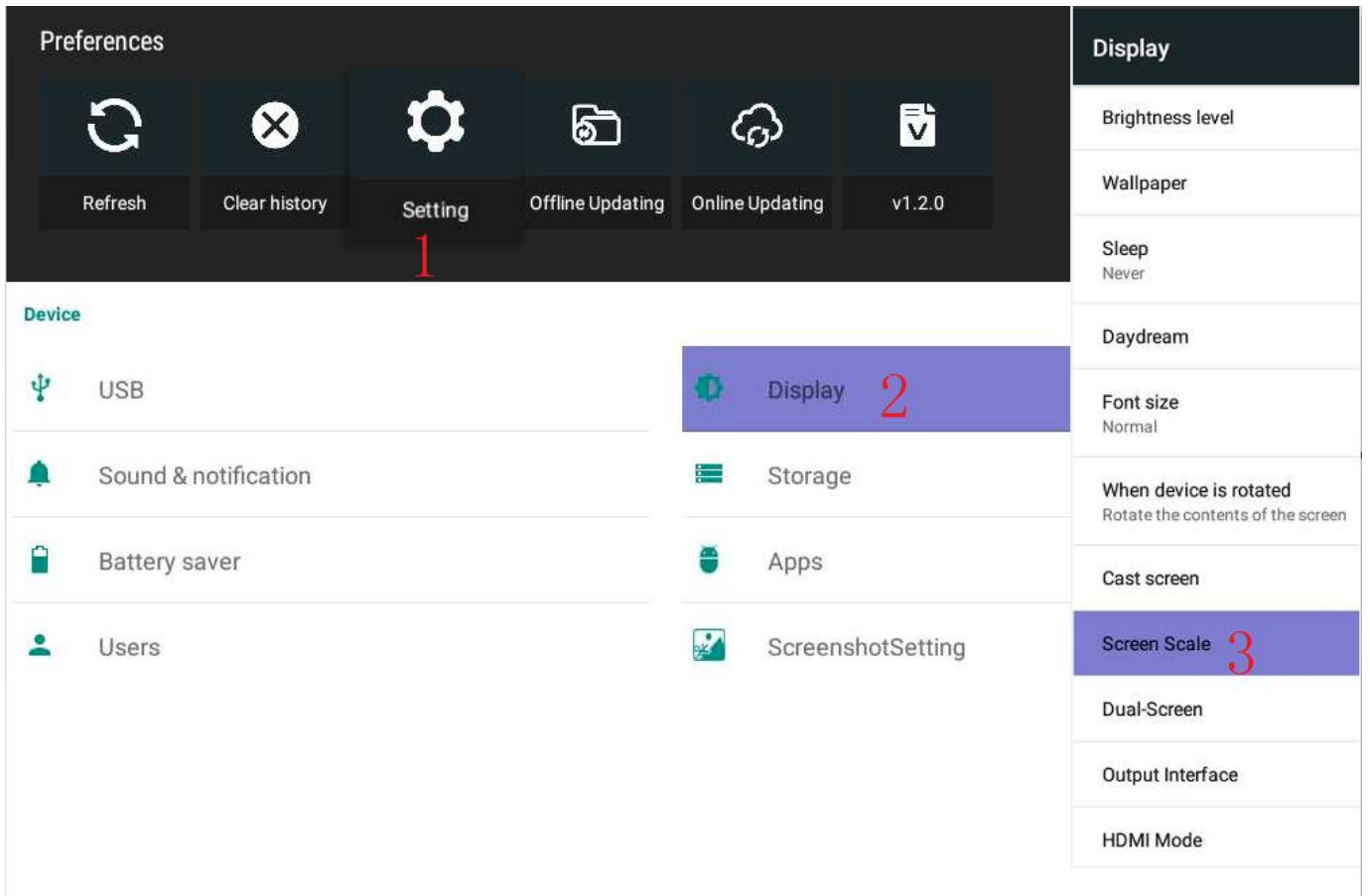
- English

At [function menu] select [settings], then press [OK] key, enter the setting interface, select [language and input method], the remote control press [OK] key, enter the interface language and input method, select [language], the remote control press [OK] key, select [English], then the interface language can be set to English .



5. Screen Zoom Setting

Select [setting] at [function menu], enter the setting interface; select [display], press the OK button to enter the display setting interface, select [screen scale], then press [OK] key, enter the screen size setting page. You can also use remote controller direction key for screen zoom setting

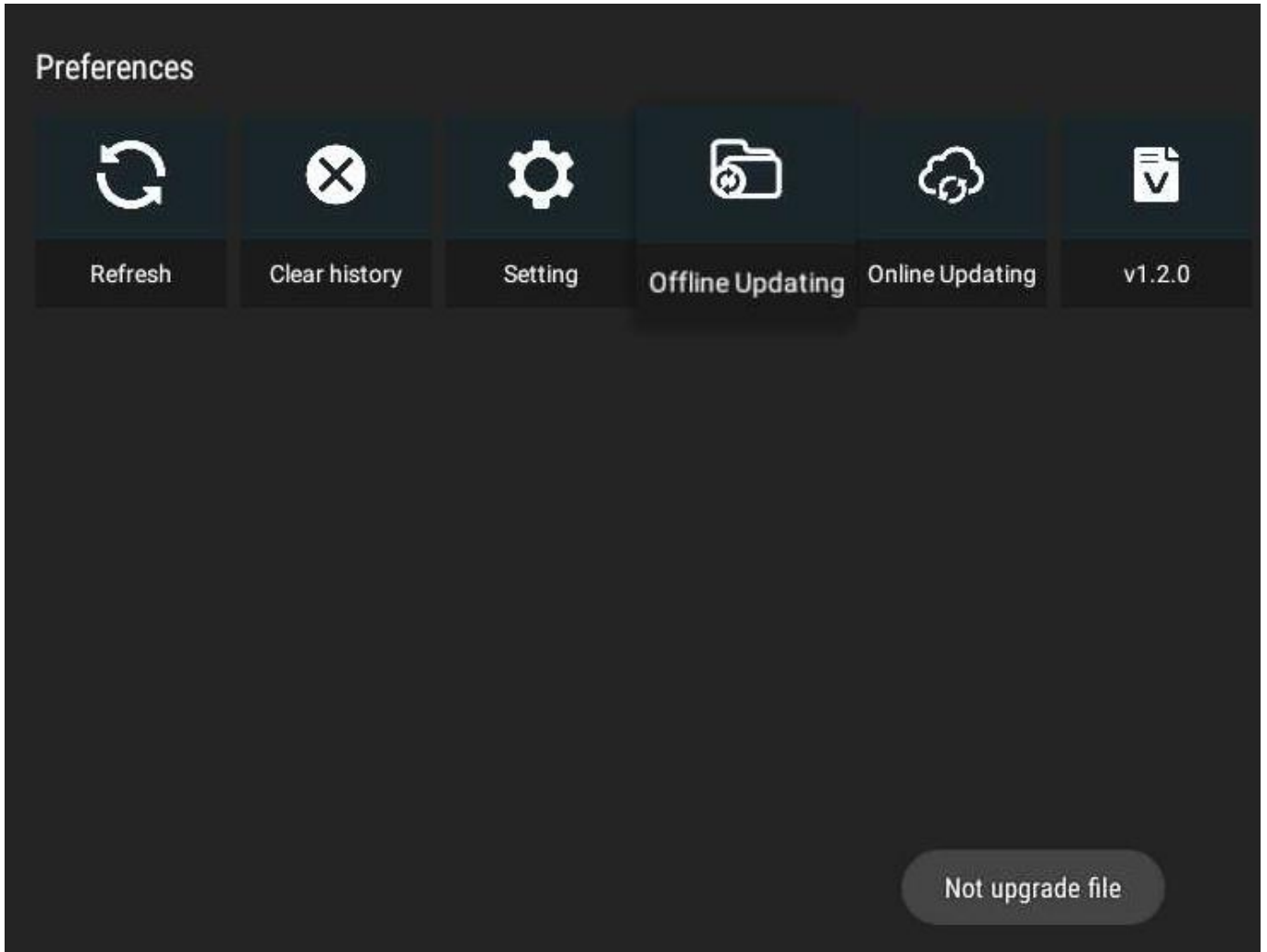


On the screen setting page, you can zoom in on the screen size by clicking the button with the mouse; you can also use the remote controller to press the arrow keys to adjust the screen size.



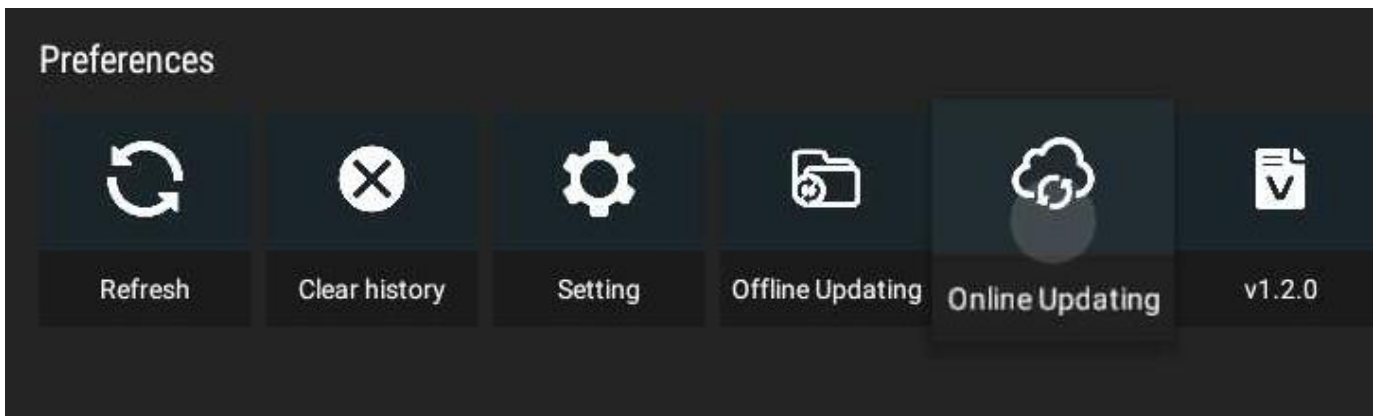
6. Offline Update

In the [Function Menu], select [Offline Update], and choose [OK] button to detect the current version. If there is no new version, it will prompt “No new version” ; if there is a new version, jump to the upgrade interface and upgrade to the new version.



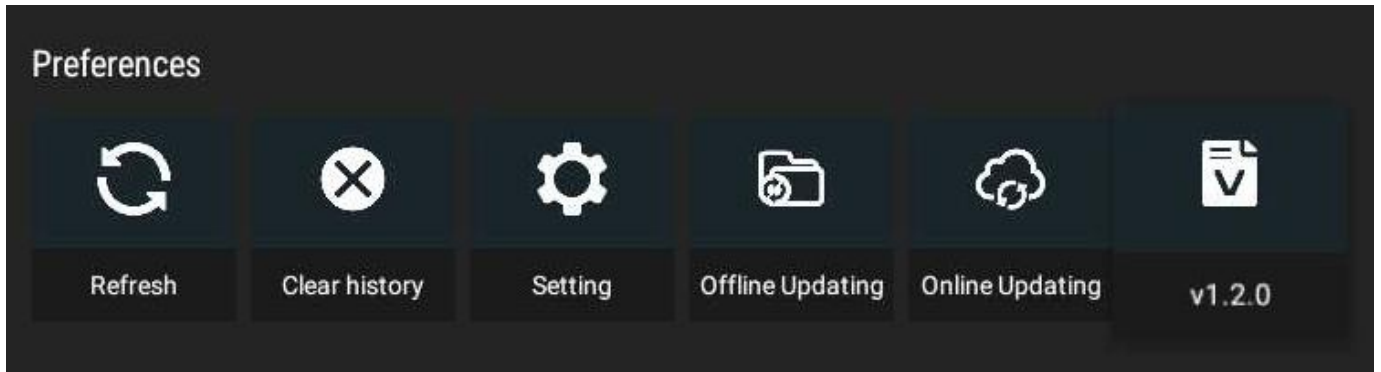
7. Online Update

Select [Online Update] in the [Function Menu], and press [OK] on the remote controller to check the current version. If there is no new version, it will prompt “No new version” ; if there is a new version, jump to the upgrade interface and upgrade to the new version.



8. View Version Information

In the version information of the [Function Menu], you can view the current version information such as V1.2.0.



VIII Power off

Press the TV-Box to turn it off.